



Oil-free Screw Air Compressor





Air end
Since 1988

**Material: Stainless steel
copper alloy, polymers**



Motor
Direct Drive

**Insulation Class: F Protection
Level: IP55 Bearing: SKF**



Separator
Clean and Safe air

**Material: Medical
Stainless steel**



Cooler
High Efficiency

**Material: Copper Best
Quality and Structure**



Inverter&Electric
Inverter/PLC: Inovance

Thermal relay
A.C. Contractor: Siemens



Control Pannel
Brand: Inovance

**Display all operation
parameters and alarm system**



Water Softener
Brand: Pentair

**Offer pure lubricating water and
extend the service life of air end**



Control Valve
Brand: SMC

**Imported famous brand
component to ensure the stability**





100% OIL-FREE

- More than 20 years experiences in Water-lubricated Oil-free technology
- Germany Rhineland TUV Class 0 Oil-free Certification

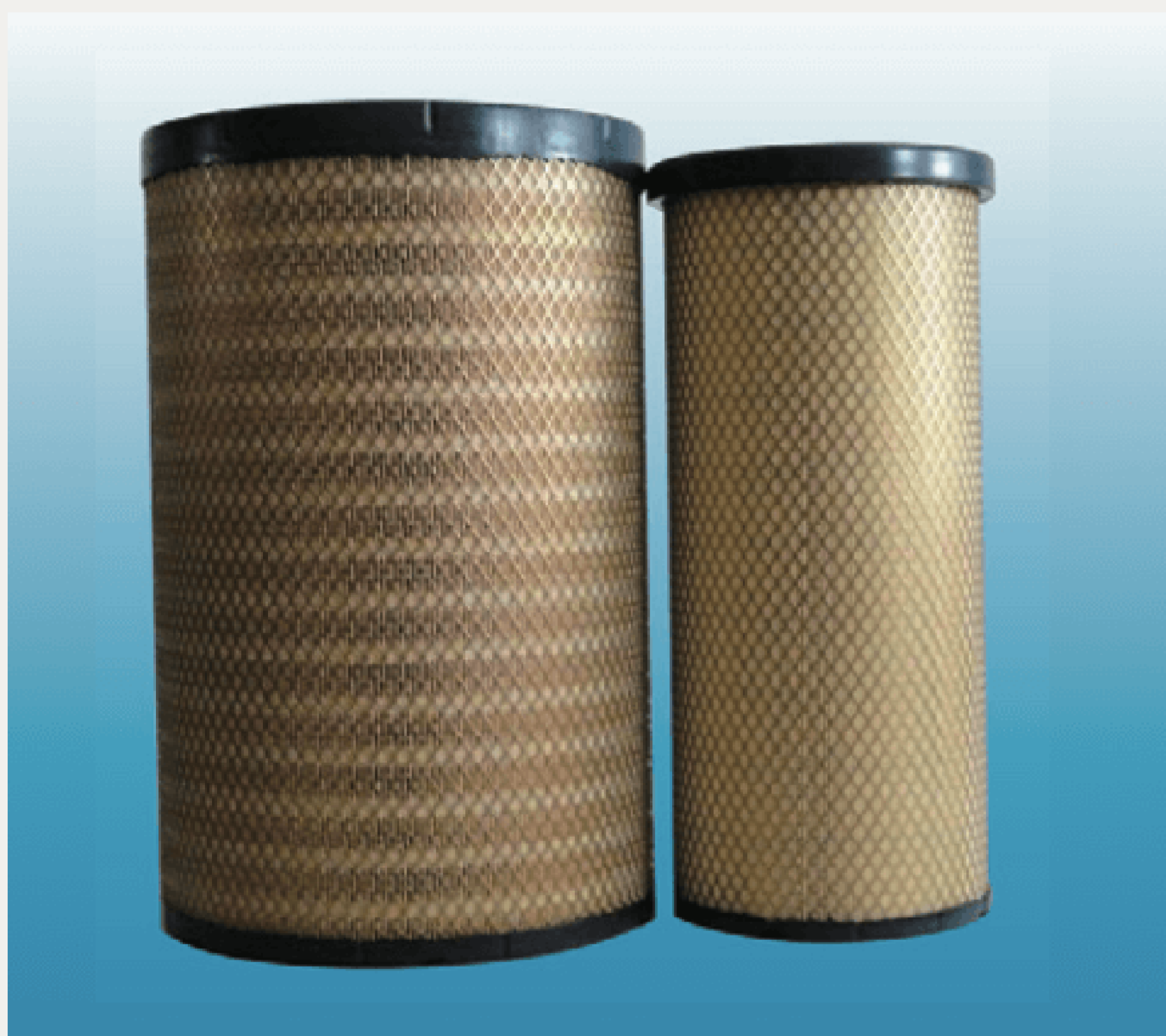
MOST RELIABLE

- More than 30 years experiences in Single Screw Technology
- Most balance and reliable structure
- Low temperature(< 55 C) reduces the stress on components



LOWEST MAINTENANCE

- Use Water as lubricating medium instead of oil
- Without Oil Air Separation Unit
- Consumable parts are only air and water filter elements



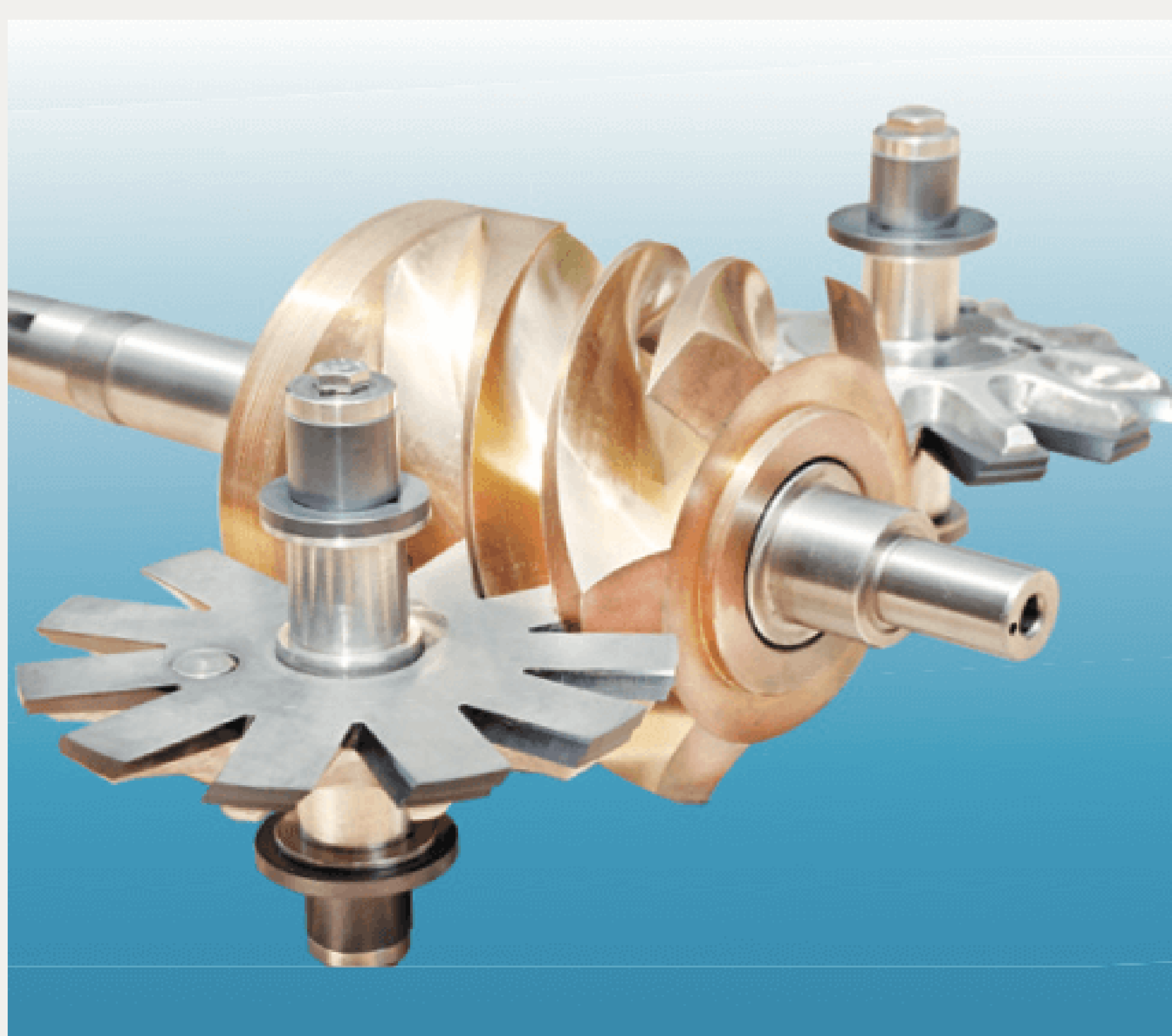
ENERGY SAVING >30%

- Ideal Speed(3000r/min)
- Ideal isothermal compression and no heat waste(<55 C)
- Most Advanced VSD and Two-stage compression technology



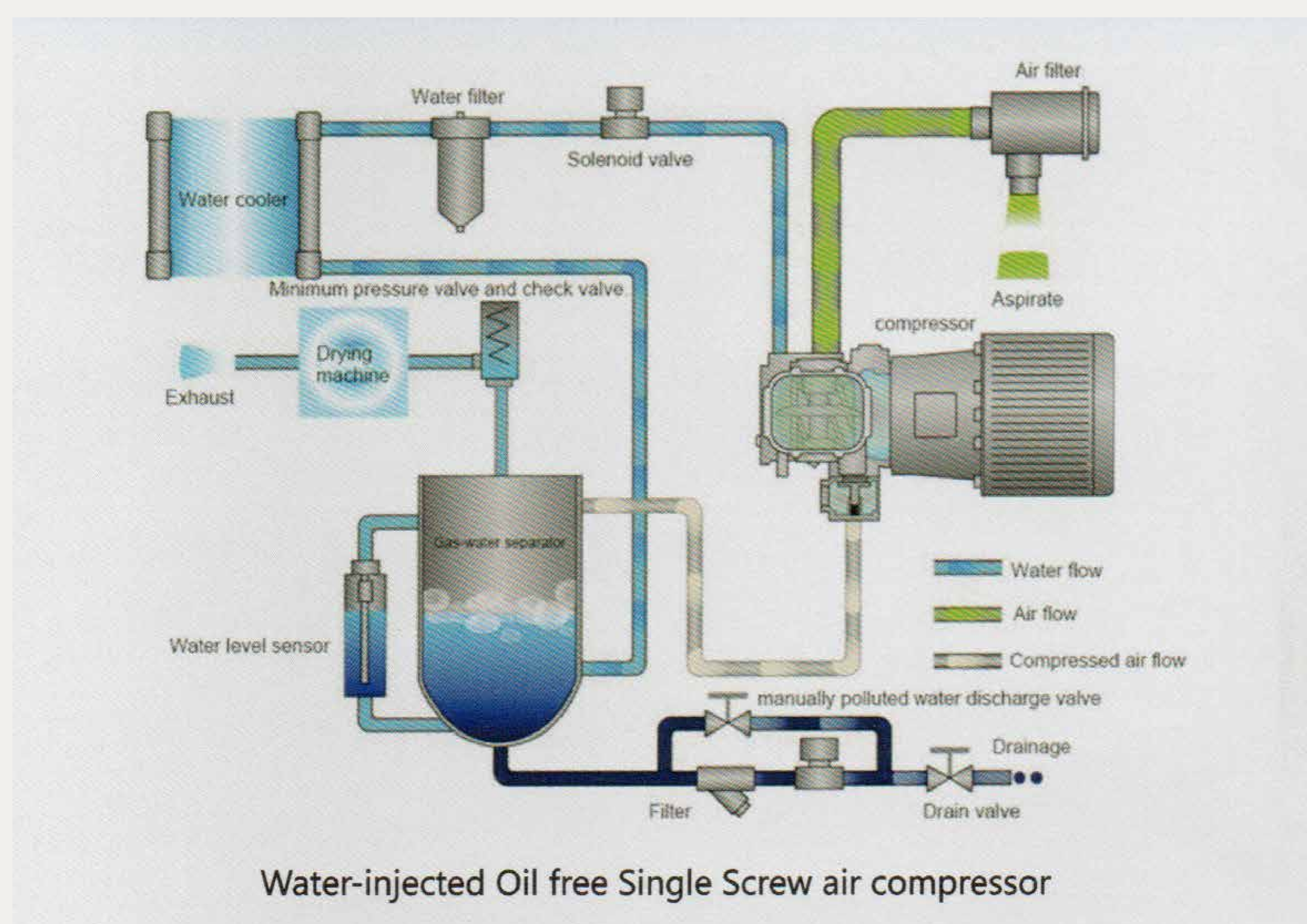
LOWEST NOISE

- Super dynamic balanced system and low vibration
- The motor and screw are directly connected without any gear
- Sound absorbing materials are also used in the shell



COMPARISON ADVANTAGES

Comparison	Water-injected Oil free Single Screw air compressor
Air Quality	100% oil-free
Air Purity	Purified by water, clean air after separation
lubricated medium	Water (Function: lubricating, cooling, sealing, denoising)
Air Discharge Temp	About 50°C
Air Delivery	Save 5%-12% more Ideal isothermal compression and no heat waste
Structure Balance	Balance, Radial and axial loads cancel each other
Installation	Simple sturcture, only a few spare parts, canbe installed and adjusted separately
Noise and Vibration	Simple structure, low vibration and less noise. Normally: 60-65dB(A)
Durability	Rotation speed 3000r/min, theoretically zeao load, long lifetime of screw(30000h), star wheel(50000h)
Maintenance	Only replaced air filter and water filter, easy maintenance and low cost



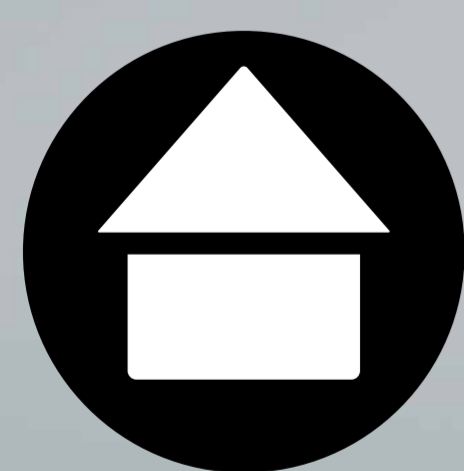
TECHNICAL SPECIFICATIONS

Model	Work Pressure		Capacity (VSD or PM VSD)			Power		Voltage	Outlet diameter	Noise	Diemension	Weight
	Bar	psi	l/s	m3/min	cfm	Kw	HP					
GD-OF-10APM	7	101	8~22	0.5~1.3	17~46	7.5	10	380V 50Hz 3Phase Customized	3/4"	57	Air-cooled: 1100x750x1320	430
	8.5	123	6~18	0.4~1.1	14~39							
	10	145	5~15	0.3~0.9	10~32							
GD-OF-15APM	7	101	11~28	0.7~1.7	24~60	11	15		3/4"	57	Air-cooled: 1100x750x1320	450
	8.5	123	10~25	0.6~1.5	21~53							
	10	145	8~22	0.5~1.3	17~46							
GD-OF-20APM	7	101	16~42	1.0~2.5	35~88	15	20		1"	57	Air-cooled: 1590x870x1500	570
	8.5	123	15~37	0.9~2.2	31~78							
	10	145	13~34	0.8~2.0	28~71							
GD-OF-25APM	7	101	21~54	1.3~3.2	46~113	18.5	25		1"	58	Air-cooled: 1590x870x1500	620
	8.5	123	18~47	1.1~2.8	39~99							
	10	145	16~42	1.0~2.5	35~88							
GD-OF-30APM	7	101	25~62	1.5~3.7	53~131	22	30		1"	60	Air-cooled: 1590x870x1500	640
	8.5	123	23~57	1.4~3.4	49~120							
	10	145	20~50	1.2~3.0	42~106							
GD-OF-40APM	7	101	35~89	2.1~5.3	74~187	30	40	1"	61	Air-cooled: 1690x1000x1600 Water-cooled: 1590x950x1500	980	
	8.5	123	31~79	1.9~4.7	67~156							
	10	145	28~72	1.7~4.3	60~152							
GD-OF-50APM	7	101	41~104	2.5~6.2	88~219	37	50	1 1/2"	61	Air-cooled: 1690x1000x1600 Water-cooled: 1590x950x1500	1010	
	8.5	123	36~94	2.2~5.6	77~198							
	10	145	33~84	2.0~5.0	70~177							
GD-OF-60APM	7	101	50~127	3.0~7.6	106~269	45	60	1 1/2"	65	Air-cooled: 2350x1250x1750 Water-cooled: 1680x1100x1520	1110	
	8.5	123	45~114	2.7~6.8	95~240							
	10	145	40~100	2.4~6.0	84~212							
GD-OF-75APM	7	101	66~167	4.0~10.0	141~353	55	75	1 1/2"	67	Air-cooled: 2350x1250x1750 Water-cooled: 2100x1250x1500	1200	
	8.5	123	60~150	3.6~9.0	127~318							
	10	145	51~130	3.1~7.8	109~276							
GD-OF-100APM	7	101	86~217	5.2~13.0	183~459	75	100	2"	71	Air-cooled: 2800x1450x1900 Water-cooled: 2100x1250x1500	1550	
	8.5	123	80~200	4.8~12.0	169~424							
	10	145	66~167	4.0~10.0	141~353							
GD-OF-120APM	7	101	111~280	6.7~16.8	236~593	90	120	2"	72	Water-cooled: 2450x1450x1700	2250	
	8.5	123	100~250	6.0~15.0	212~530							
	10	145	93~234	5.6~14.0	197~495							
GD-OF-150APM	7	101	133~334	8.0~20.0	282~706	110	150	2 1/2"	74	Water-cooled: 2450x1450x1700	2450	
	8.5	123	123~309	7.4~18.5	261~653							
	10	145	106~267	6.4~16.0	226~565							
GD-OF-180APM	7	101	166~417	10.0~25.0	353~883	132	180	3"	77	Water-cooled: 2450x1450x1700	2450	
	8.5	123	153~384	9.2~23.0	325~812							
	10	145	133~334	8.0~20.0	282~706							
GD-OF-215APM	7	101	180~450	10.8~27.0	381~954	160	215	3"	78	Water-cooled: 2800x1500x1900	2600	
	8.5	123	170~425	10.2~25.5	360~900							
	10	145	160~400	9.6~24.0	339~848							
GD-OF-250APM	7	101	225~564	13.5~33.8	476~1194	185	250	3"	78	Water-cooled: 2800x1500x1900	3000	
	8.5	123	206~517	12.4~31.0	438~1095							
	10	145	186~480	11.2~28.8	395~1017							
GD-OF-340APM	7	101	286~717	17.2~43.0	697~1519	250	340	4"	79	Water-cooled: 3100x2250x2200	4500	
	8.5	123	273~684	16.4~41.0	579~1448							
	10	145	258~647	15.5~38.8	547~1370							





www.aecfilterparts.com



31 ถ.หทัยราษฎร์ แขวงบางชั้น
เขตคลองสามวา กรุงเทพฯ 10510



ติดต่อสอบถาม
ข้อมูลเพิ่มเติมได้ที่
LINE OFFICIAL ACCOUNT